



## We're the Source for Custom Tags and Labels

We welcome challenges you have and find that our solutions many times result in savings of time and money. With the capability of multi-color printing on hundreds of paper and synthetic stocks, we're certain to create the piece that best fulfills your needs. Combine that with our expertise in numbering and barcoding, a large selection of sizes and formats, finishing options, wiring and stringing, and you have a full service source for custom work.

Badger Tag & Label began in 1935 in Random Lake, Wisconsin and has expanded to the current 30,000 square feet of space. We provide personal attention that ensures accuracy and prompt delivery of each order.

[www.badgertag.com](http://www.badgertag.com)  
1-800-331-4863



# CUSTOM TAGS

Tags are available in a variety of shapes, sizes, and types each usually with a method to attach them. In addition to being used in the manufacturing process, they are attached to final industrial and consumer products.

Common applications for tags are product identification, ISO, quality control, shipping, processing, inventory, luggage, machinery, parts and cartons.

You can choose to have tags single, fanfolded, ganged, or roll form. Badger offers fiber reinforced holes, metal eyelets, and a variety of other attachments.

Our specialty is custom tags that solve a challenge you have. Contact us for a quotation and we'll also offer suggestions to develop the most cost-effective, useful tag. We can send samples of similar tags we've developed or may be able to supply samples of the quoted tag for testing.

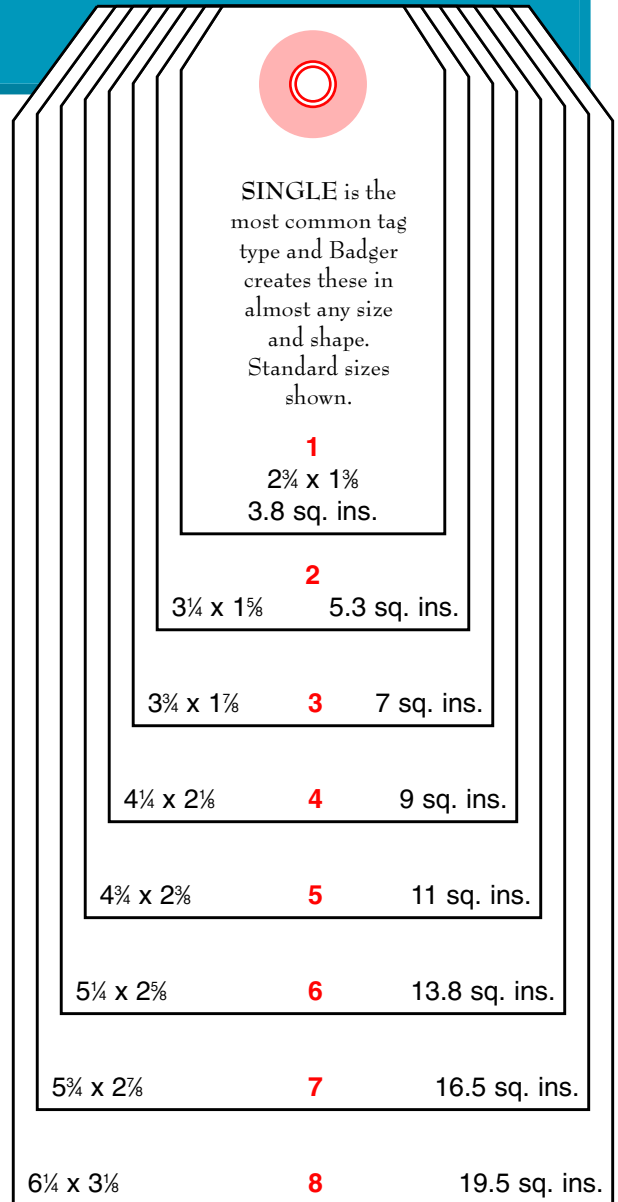


## MANIFOLD TAGS

can be produced in up to four parts with either traditional carbon or NCR (carbonless) material. You have the option to combine paper and synthetic stocks.



**SELF-SEALING LAMINATED TAGS** withstand harsh outdoor elements. The lamination provides UV protection and permanently encases important information on the tag.



To help you determine the details of your custom tags, we've developed this checklist.

- Stock - paper or synthetic, color
- Printed one side or two
- Number of ink colors
- Size or shape
- Quantity
- Numbering, barcoding
- Format - single or manifold; fanfolded, ganged, or roll form
- Reinforced hole - fiber patch, metal eyelet, mylar strip; location and size
- Special finishing - perforate, score, laminate, etc.
- Wiring, stringing, hooks
- Artwork to be supplied



# CUSTOM LABELS

A label is a piece that includes some type of adhesive. Most commonly, labels are used for product identification, mailing and shipping with address information, and quality control.

Since there are a great variety of adhesive options, it is important to determine the type of surface the label will adhere to. Whether you choose permanent, removable, temporary, or any of the other special adhesive grades we offer, we'll work with you to confirm the optimum choice.

The type of label you need depends on a number of other variables including what environments it will be exposed to such as sunlight, humidity, moisture, chemicals, extreme heat or cold, and the outdoor elements. Many labels today are imprinted at the end-user facilities using thermal, laser, or inkjet printers.

You can choose to have labels single, single with a pull tab, on sheets, fanfolded, or on rolls to best fit the way you'll use them.

Our specialty is custom labels that solve a challenge you have. Contact us for a quotation and we'll also offer suggestions to develop the most cost-effective, useful label. We can send samples of similar labels we've developed or may be able to supply samples of the quoted label for testing.

UL/CSA LABELS use durable white or silver stock and may replace expensive metal nameplates. As part of our UL Repackaging Program, we have a wide range of materials that can be converted to blank labels for your imprinting using thermal transfer or dot matrix methods.



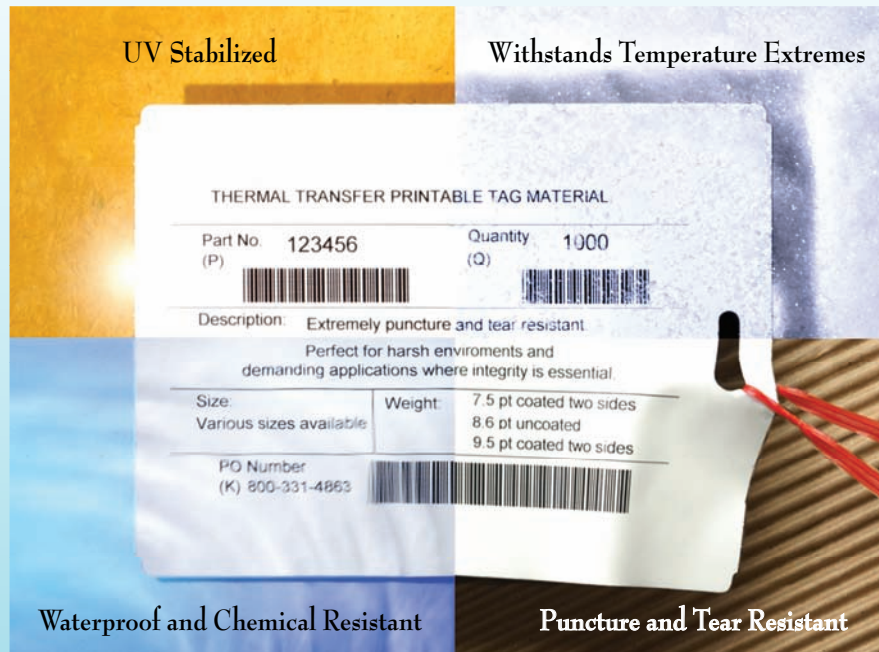
**SELF-SEALING LAMINATED LABELS** withstand harsh outdoor elements. The lamination provides UV protection and permanently encases important information on the label.



To help you determine the details of your custom labels, we've developed this checklist.

- Stock - paper or synthetic, color
- Number of ink colors
- Size or shape
- Quantity
- Type of adhesive
- Numbering, barcoding
- Format - die or butt cut roll, single with pull tab, single sheet, fanfolded
- Unwind style - roll size, core size
- Special finishing - perforate, score, lamination, UV coating, etc.
- Artwork to be supplied

# IMPRINTABLE SYNTHETIC TAGS



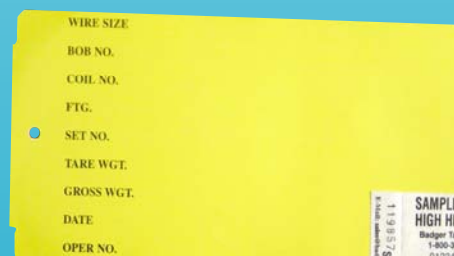
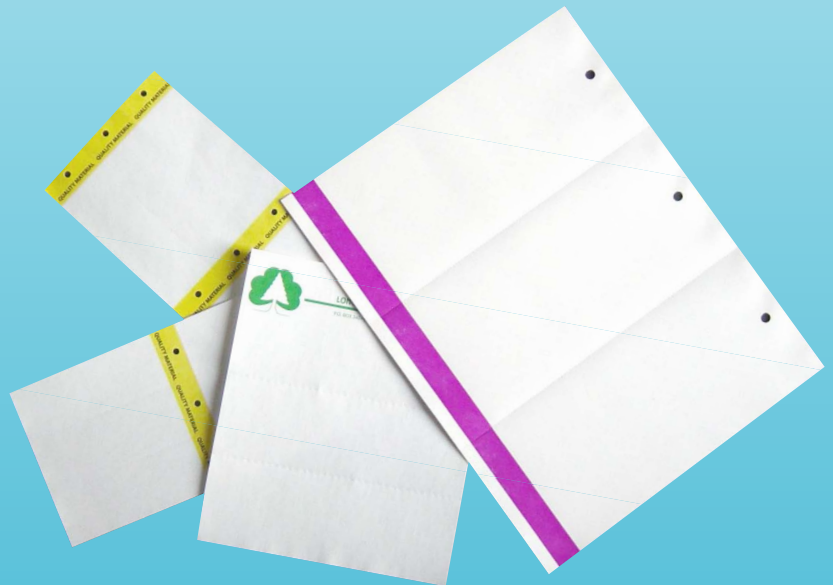
Badger prints on or converts for your in-plant use a variety of synthetic stocks. The features of these stocks are UV stabilized, able to withstand temperature extremes, waterproof and chemical resistant, and extremely puncture and tear resistant which makes them the solution for demanding applications. Select synthetic stocks maintain color and/or structural integrity while going through high heat conditions.

The option for you to imprint additional information on the tags at your facility make them cost efficient since you can have one standard tag that you customize with product number, barcode, and any other specific details. An imprintable synthetic tag can be printed on using thermal (direct or transfer), laser, inkjet, or dot matrix methods.

Imprintable synthetic tags can be a replacement for more costly steel and metal related tags.

Current applications for imprintable synthetic tags are nursery products, sewn-in or stitched on, sling tags, membership cards, and promotional items. These tags are used extensively in heat-treating facilities, foundries, and steel/metal fabrication companies.

Ask for additional samples of our imprintable synthetic tags.



# IMPRINTABLE SYNTHETIC LABELS

Badger prints on or converts for your in-plant use a variety of polyester stocks. These synthetic stocks have a special surface treatment that accepts images from a variety of printers, typewriters, ball point pens, regular and grease pencils. The adhesive used is high strength. Badger is both UL and CSA approved to produce labels for indoor and outdoor applications.

The main benefit of using this type of label is that you can save money by ordering a standard "corporate" version and then imprint at your facility using thermal (direct or transfer), laser, inkjet, or dot matrix methods to customize. There is also an option for Badger to add UV coating in spot locations to enhance the overall look.

Using imprintable synthetic label stock allows you to add color to common barcode labels which can create branding impact. You can have Badger preprint your company name, logo, and any other graphics you choose in color on either direct thermal or thermal transfer stock. Then you imprint the barcode at your facility.

Another benefit is that plain kraft shipping cartons can now be used and identified with the imprintable synthetic label versus having to inventory outdated, specific boxes.

Current applications for imprintable synthetic labels are pressure sensitive rating plates, warranty labels, shipping labels, and other identification labels.

Ask for additional samples of our imprintable synthetic labels.





# ATTACHMENTS & CAPABILITIES



Badger offers a variety of attachments including:

## STRINGS

- Pulled through and knotted with loop lengths from 3-1/4" up to 6-1/4"
- Looped with two loose ends, string lengths from 12" up to 16" in total length
- Elastic/booklet strings with loop length from 2" up to 3-1/2", white

## PLASTIC COATED WIRES

Available in 4" or 12" length in bundles of 500.

## WIRES

Available in galvanized (23 or 26 gauge), copper (23 gauge), and stainless steel (26 gauge). Wires are attached with a double end (10", 12" standard, 14", or 16" total length of wire) or single end (6" standard, 7", or 8").

## LOOSE WIRES

Available in bundles of 1000 and galvanized. Both 23 and 26 gauge in 12" and 24"

## HOOKS

Available in deadlock, safety, and meat varieties. Contact us for the selection.

## BARCODING

Badger can print consecutive, static, machine and human readable codes.



## SCORING

This process impresses or indents an area to make it easier to fold.

## PERFORATING

Allows for tearing a portion of a tag or label off easily.

## LAMINATING

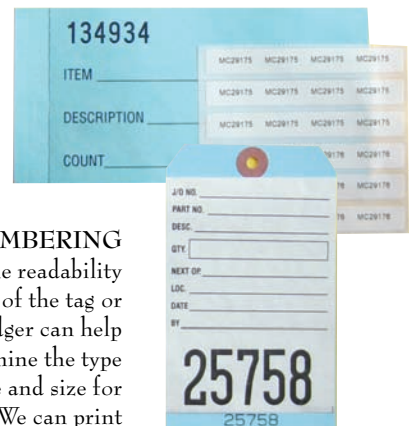
To protect information printed on tags and labels lamination can be added. Both gloss and matte finishes are available.

## UV COATING

Adding this coating to tags or labels makes them resistant to the damaging effects of the sun.

## HOLD AND RELEASE PROGRAM

If you choose to print a larger quantity of tags or labels than you immediately need, Badger will hold the remainder in inventory and drop ship as you direct. This allows for economical printing since you print the greater quantity at one time but don't have them take up your valuable warehouse space. This is also a nice option for companies that have multiple manufacturing locations.



## NUMBERING

Based on the readability and use of the tag or label, Badger can help you determine the type face and size for numbers. We can print one or multiple numbers on each tag or label.



PO Box 306, Random Lake, WI 53075  
920-994-4348 or 800-331-4863  
Fax 920-994-2040  
www.badgertag.com e-mail: sales@badgertag.com