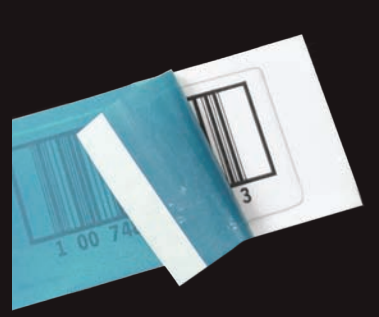
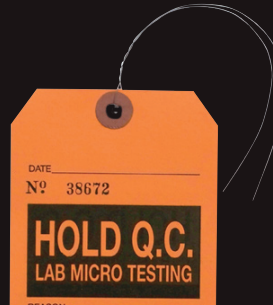
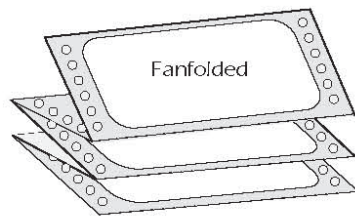
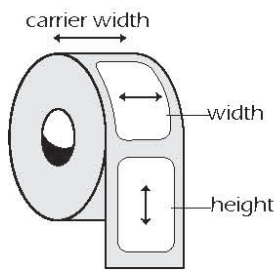
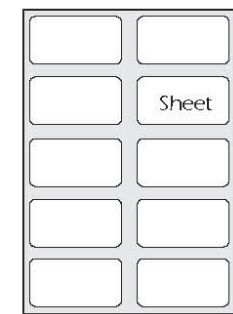
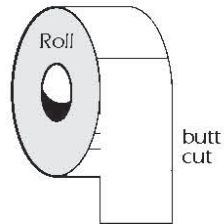
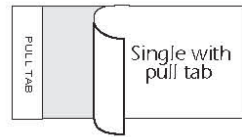
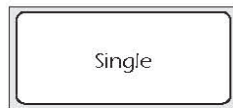
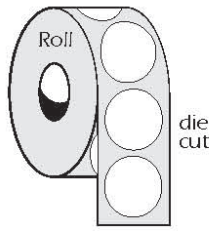


BADGER

TAG & LABEL CORPORATION



LABEL FORMATS



When specifying labels use width x height.

SIX-COLOR UV DIGITAL PRINTING and PLOTTER CUTTING

Designed for small to mid volume or specialty projects.

SPECIFICATIONS

- Up to 60" width
- Large selection of materials, up to 1.75" thickness
- Photo quality images
- Intricate die and kiss cuts without tooling charges
- Outdoor life up to three years
- Sub-surface printing for abrasion resistance

EXAMPLES OF PROJECTS

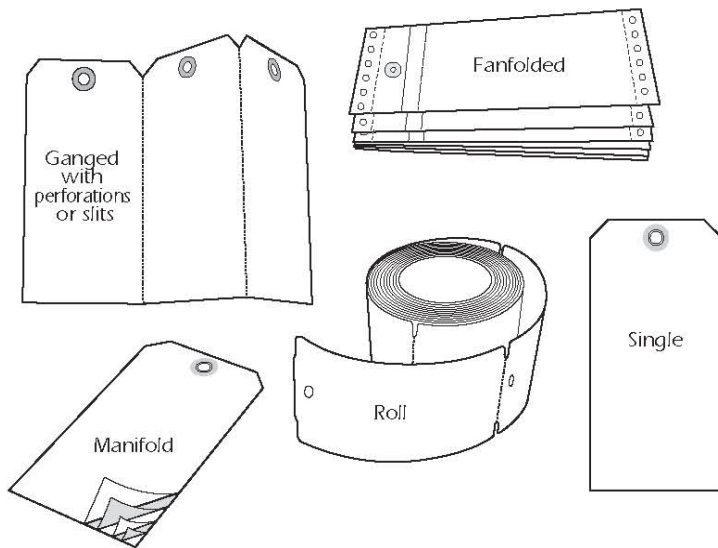
- Faceplates
- Window clings
- Safety decals
- Control panels
- Magnets
- Product labels
- Bumper stickers
- Shelf strips
- Signs/display graphics



TAG FORMATS

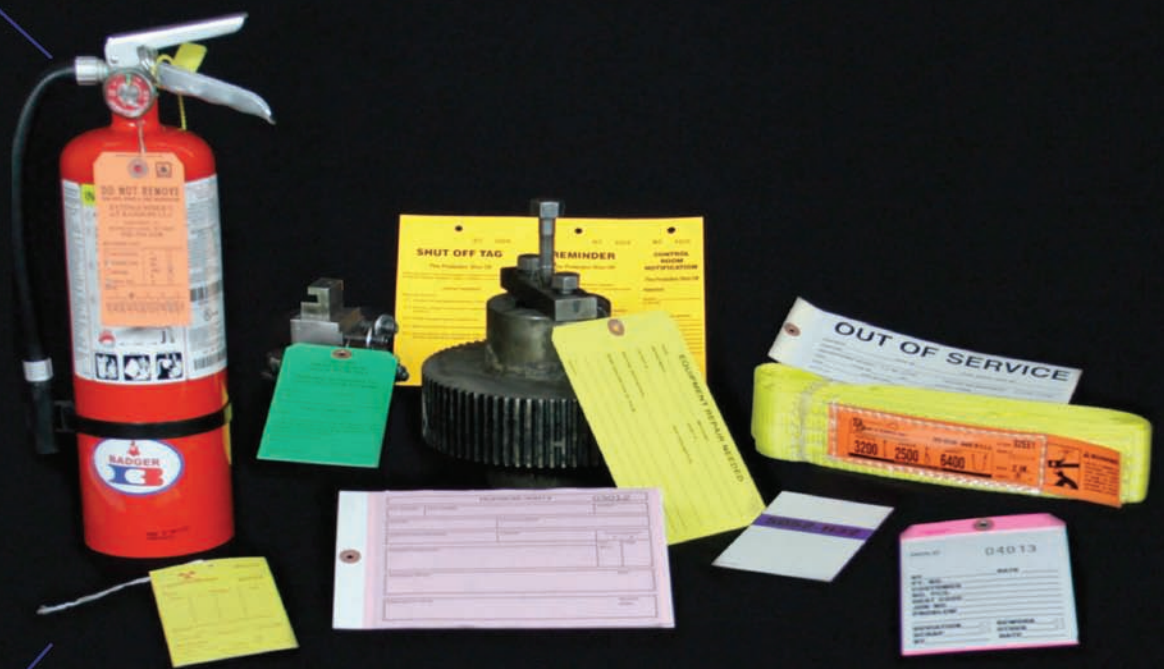
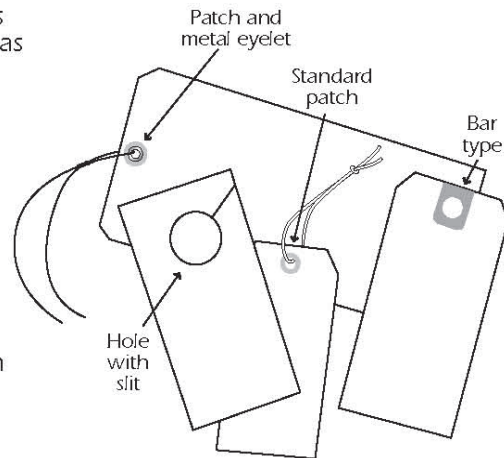
TAG SIZES
 We offer a variety of standard size tags. This illustration shows the actual size of them.
 You are not limited to the sizes shown.

1 2¼ x 1¾	3.8 sq. ins.
2 3¼ x 1¾	5.3 sq. ins.
3 3¾ x 2¼	7 sq. ins.
4 4¼ x 2¼	9 sq. ins.
5 4¾ x 2¼	11 sq. ins.
6 5¼ x 2¼	13.8 sq. ins.
7 5¾ x 2¼	16.5 sq. ins.
8 6¼ x 3¼	19.5 sq. ins.



TAG HOLE REINFORCEMENTS

Tag reinforcements can be referred to as reinforced holes, fiber patches or metal eyelets. We use fiber patches as our standard reinforcements. Mylar strip patch, metal eyelets, bar patches and color patches are also available at an additional charge.



STOCK SELECTION

We offer both paper and synthetic stocks. Paper is generally best for indoor applications and synthetic for outdoor, high heat, or very demanding applications. Both types of stock are available coated or uncoated.

COLORS FOR TAG STOCKS

These colors are always available on our floor. You can specify virtually any color stock and we will source or tint it.

STANDARD COLORS

Manilla	Dark Green	Gray
White	Light Green	Lilac
Red	Yellow	Salmon
Dark Blue	Orange	Buff
Light Blue	Pink	

FLUORESCENT COLORS

Red	Green	Yellow
Orange	Pink	

INK COLORS

Specify any Pantone® color(s). We can print from one to six spot colors or four-color process.

FINISHING OPTIONS

SCORING - impresses or indents an area to make it easier to fold

PERFORATION - creates areas that are removed while leaving much of the stock intact to allow for tearing a portion of a tag or label off easily

LAMINATION - either gloss or matte finish protects printed information. Additional protection available with UV laminates.

NUMBERING

We can print numbers in a large variety of fonts/typfaces and many different sizes. Here is a sample of the more common choices.

numbers actual size

13876 1"

98691 3/8"

310957 1/4"

985352 3/16"

484883 1/8"

214371 3/32"

ADDITIONAL
SIZES
AVAILABLE

BARCODING

We print consecutive, static, machine and human readable codes.



ATTACHMENTS

STRINGS

- **Pulled Through and Knotted (P.T.K.)** - a knotted loop length 3 1/4" up to 6 1/4"
- **Looped** - 12," 14," or 16" in total length
- **Elastic** - with loop length from 2" to 3 1/2"

HOOKS - deadlock, safety, and meat varieties

WIRES - attached with a double end (10", 12" standard, 14" or 16" total length of wire) or single end (6" standard, 7," or 8")

- **Galvanized** - 23 or 26 gauge
- **Copper** - 23 gauge
- **Stainless steel** - 26 gauge

LOOSE STRINGS AND WIRES

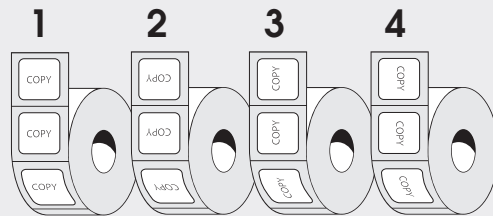
- **#5 polished cotton string** - bundles of 1,000
- **Plastic coated wire** - bundles of 1000
- **Galvanized wire** - 23 and 26 gauge, in 12" and 24," bundles of 1000

LABEL UNWIND STYLES

Direction of unwind is determined by how they will be used at your facility. We are familiar with many machine types and can offer recommendations that may best suit your situation.

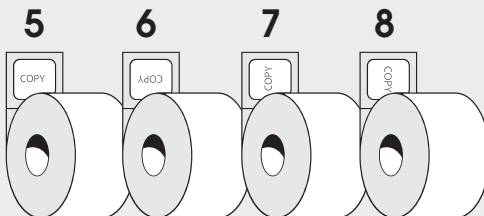
LABELS WOUND ON OUTSIDE OF ROLL

- 1 Top of copy dispenses first
- 2 Bottom of copy dispenses first
- 3 Right side of copy dispenses first
- 4 Left side of copy dispenses first



LABELS WOUND ON INSIDE OF ROLL

- 5 Top of copy dispenses first
- 6 Bottom of copy dispenses first
- 7 Right side of copy dispenses first
- 8 Left side of copy dispenses first



www.badgertag.com

PO Box 306
Random Lake, WI 53075
920-994-4348 or
800-331-4863
Fax 920-994-2040
e-mail: sales@badgertag.com

